



Flight Plan & Site Survey

Created using **RPAS Wilco**®

Reference No:	6F9404
Title:	Avon higher 2024
Pilot Name:	[REDACTED]
Pilot Certificate:	[REDACTED]
Flight Start:	July 4, 2024 1:41 PM
Flight End:	July 4, 2024 3:41 PM
Flight Area (Latitude):	44° 57' 22.00" N (44.956)
Flight Area (Longitude):	64° 10' 47.00" W (-64.18)
Altitude - Radius:	Alt: 1700 ft - Rad: 3704.0 m (2.0 nm)
Classification:	UNCONTROLLED
FIR - Contact:	CZQM - 506-867-7484

Please ensure you received all required authorizations prior to flight.

Disclaimer

This Site Survey was created using RPAS Wilco by AIM Robotics. The flight plan contained is intended only for RPAS flights on the date/time and location specified. The user accepts all responsibility for the accuracy and completeness of the information contained.

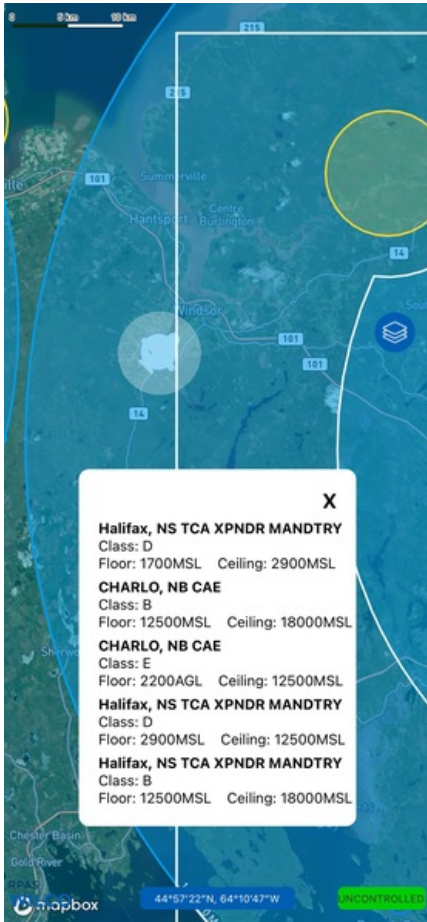
For the complete Terms & Conditions, see

<https://rpaswilco.com/#/tnc>

Included

- Site Survey
- Obstacles (if available)
- Nearby Aerodromes
- Canadian Aviation Regulations
- GFA
- Aerodrome Supplements
 - METAR & TAF (if available)
 - NOTAMS
 - CFS



Flight Map



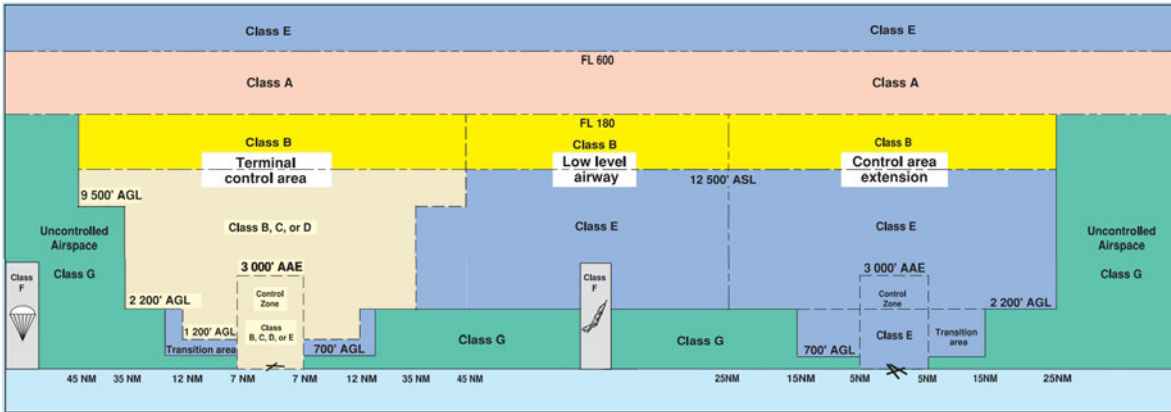
RPAS Specification

- **Manufacturer:**
MAAC
- **Model:**
MODEL AIRPLANE
- **Registration Number:**
[REDACTED]
- **Eligible for advanced operations:**
Yes
- **Manufacturer RPAS safety assurance:**
 - **Controlled Airspace:** YES
 - **Near People:** NO
 - **Over People:** NO

MAP Details

	Latitude	Longitude
 MODEL	44° 57' 22.00" N (44.956)	64° 10' 47.00" W (-64.18)
 Pilot Randall Hepner	44° 57' 25.60" N (44.9571)	64° 10' 50.60" W (-64.1807)

Airspace Classification



Overlying Airspaces

Class	Name	Floor	Ceiling
B	Halifax, NS TCA XPNDR MANDTRY	12500MSL	18000MSL
D	Halifax, NS TCA XPNDR MANDTRY	2900MSL	12500MSL
E	CHARLO, NB CAE	2200AGL	12500MSL
B	CHARLO, NB CAE	12500MSL	18000MSL

Nearest Aerodromes & Distance from Operation

STANLEY (CCW4 - AERODROME - Reg)	Lat: 45.101	Long: -63.921	25.942KM	14.01NM	NE
KINGS AERODROME (CHL2 - AERODROME - Reg)	Lat: 45.142	Long: -64.422	28.098KM	15.17NM	NW
KENTVILLE (VALLEY REGIONAL HOSPITAL) (CKV8 - HELIPORT - Cert)	Lat: 45.082	Long: -64.5	28.804KM	15.55NM	NW
KENTVILLE (CAMP ALDERSHOT) (CKM9 - HELIPORT - DND)	Lat: 45.094	Long: -64.509	30.08KM	16.24NM	NW

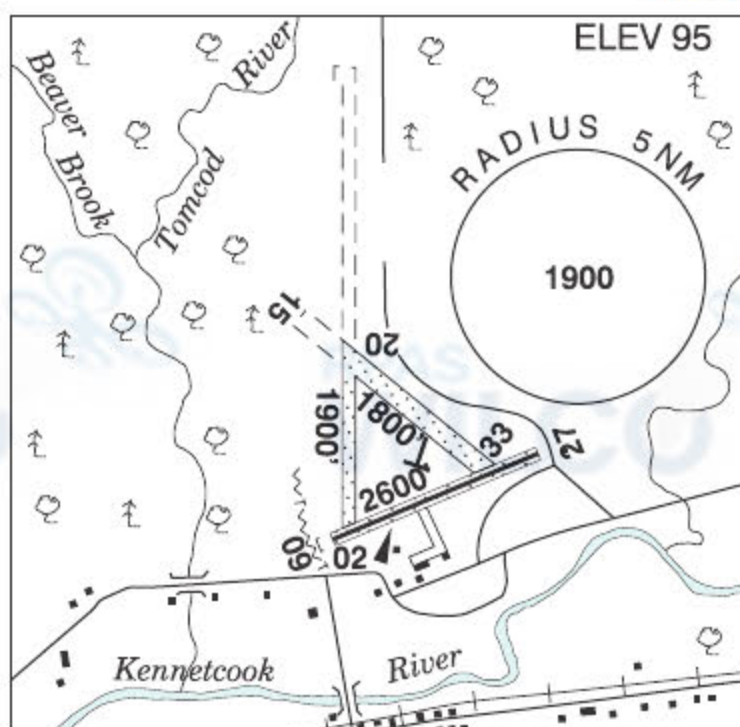
NOVA SCOTIA

AERODROME/FACILITY DIRECTORY

STANLEY NS

CCW4

REF	N45 06 02 W63 55 14 12NE 18°W (2014) UTC-4(3) Elev 95' A5003 LO8 T2
OPR	Stanley Sport Avn 902-632-2251 Reg
PF	D-2,3,4,5,6
FLT PLN	
FIC	London 866-WXBRIEF (Toll free within Canada) or 866-541-4104 (Toll free within Canada & USA)
ACC	(IFR only) Moncton 506-867-7177 or 866-480-8200.
RWY DATA	Rwy 02/20 1900x90 GRASS Rwy 09/27 2600x125 GRASS/ASPH Rwy 15/33 1800x100 GRASS
RCR	Opr No win maint.
COMM	
ATF	UNICOM ltd hrs O/T tfc 122.8 5NM 2900 ASL
CAUTION	50' high trees on apch to Rwy 09. Unlgtd twr 250 AGL 4.2 NM SE of A/D.



NOVA SCOTIA

AERODROME/FACILITY DIRECTORY

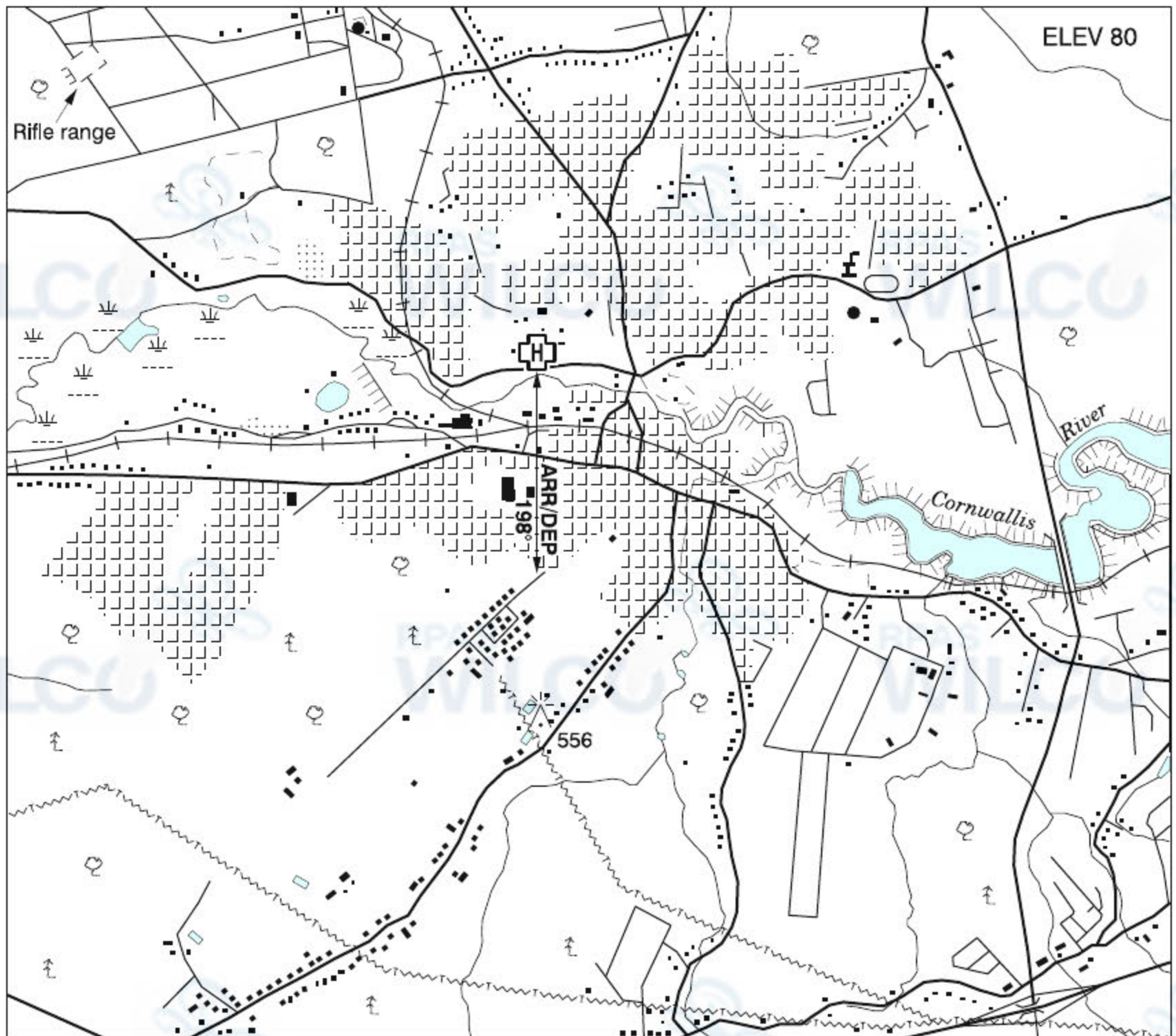
HILLATON / KINGS AERODROME NS

CHL2

REF	N45 08 34 W64 25 22 Adj SE 18°W (2015) UTC-4(3) Elev 98' A5003 LO8	<p>The chart shows the aerodrome layout with runways 11/29 (3070x75 ASPH) and 18/36 (2100x75 GRASS). A 5 NM radius circle is centered on the aerodrome with an elevation of 2300. A tower is located at 272 ASL, approximately 0.5 NM NE of the aerodrome. Other features include a windsock, p-lines, and various terrain elevations.</p>
OPR	CHL2 Aviation Inc 902-365-7000 ext 390 www.KingsAero.com Reg PPR	
FLT PLN	FIC London 866-WXBRIEF (Toll free within Canada) or 866-541-4104 (Toll free within Canada & USA)	
RWY DATA	Rwy 11(106°)/29(286°) 3070x75 ASPH centre 1670x45, edges uneven ASPH/GRASS Thld 11 displ 900' night only Thld 29 displ 500' night only Rwy 18(178°)/36(358°) 2100x75 GRASS RCR Opr Ltd win maint. Rwy 18/36 sfc ruf.	
LIGHTING	11-(TE LO), 29-(TE LO) ARCAL-123.2 type J Lgtd windsock avbl O/R.	
COMM	ATF tfc 123.2 5NM 3100 ASL	
CAUTION	Marked p-lines on apch to Rwy 29. Lgtd tower 272 ASL aprx 0.5NM NE of A/D. Migratory bird activity dur spring and fall.	

NOVA SCOTIA

AERODROME/FACILITY DIRECTORY

KENTVILLE (VALLEY REGIONAL HOSP) NS (Heli)**CKV8**

REF	N45 04 54 W64 30 00 Adj 18°W (2014) UTC-4(3) Elev 80' A5003
OPR	Valley Regional Hosp 902-678-7381 Cert PPR
FLT PLN	
FIG	London 866-WXBRIEF (Toll free within Canada) or 866-541-4104 (Toll free within Canada & USA)
ACC	(IFR only) Moncton 506-867-7177 or 866-480-8200.
HELI DATA	82' dia ASPH (rstd to heli with max overall length of 52.5')
LIGHTING	RY(LO) ARCAL-123.0 type J
COMM	
ATF	tfc 123.2 5NM 3100 ASL
PRO	Arr/dep 198° fr heli, slope 12% (H2), day/night use.
CAUTION	CYR 706 (Aldershot) SFC-1000 1.4NM NW. Obstruction 556 ASL under arr/dep track - see sketch.

NOVA SCOTIA

AERODROME/FACILITY DIRECTORY

KENTVILLE (CAMP ALDERSHOT) NS (Heli)**CKM9**

REF	N45 05 39 W64 30 32 0.5NW 18°W (2013) UTC-4(3) Elev 100' A5003	
OPR	DND 902-678-7930 Ext 2224 CSN 319-568-2224 Mil PPR	
FLT PLN	PPR 24 hrs ntc. Ctc 902-678-7930 Ext 2224 or CSN 319-568-2224 12-20Z† Mon-Fri exc stat hols O/T ctc main gate Ext 2139	
FIC	London 866-WXBRIEF (Toll free within Canada) or 866-541-4104 (Toll free within Canada & USA)	
ACC	(IFR only) Moncton 506-867-7177 or 866-480-8200.	
HELI DATA	500' x 500' GRASS/GRVL. No win maint.	
COMM	ATF tfc 123.2 5NM 3100 ASL	
PRO	Arr/dep 075° fr heli	
CAUTION	CYR 706 (Aldershot) SFC-1000 0.8NM WNW. Valley Regional Hosp Heli (CKV8) 0.8NM SSE.	

Canadian Aviation Regulations

Division III — General Operating and Flight Rules

For full listing please visit : <https://laws-lois.justice.gc.ca/eng/regulations/SOR-96-433/FullText.html#s-901.27>

Visual Line-of-sight

- **901.11 (1)** Subject to subsection (2), no pilot shall operate a remotely piloted aircraft system unless the pilot or a visual observer has the aircraft in visual line-of-sight at all times during flight.
- **(2)** A pilot may operate a remotely piloted aircraft system without the pilot or a visual observer having the aircraft in visual line-of-sight if the operation is conducted in accordance with a special flight operations certificate — RPAS issued under section 903.03.

Procedures

- **901.23 (1)** No pilot shall operate a remotely piloted aircraft system unless the following procedures are established:
 - **(a)** normal operating procedures, including pre-flight, take-off, launch, approach, landing and recovery procedures; and
 - **(b)** emergency procedures, including with respect to
 - **(i)** a control station failure,
 - **(ii)** an equipment failure,
 - **(iii)** a failure of the remotely piloted aircraft,
 - **(iv)** a loss of the command and control link,
 - **(v)** a fly-away, and
 - **(vi)** flight termination.
- **(2)** If the manufacturer of the remotely piloted aircraft system provides instructions with respect to the topics referred to in paragraphs (1)(a) and (b), the procedures established under subsection (1) shall reflect those instructions.
- **(3)** No pilot shall conduct the take-off or launch of a remotely piloted aircraft unless the procedures referred to in subsection (1) are reviewed before the flight by, and are immediately available to, each crew member.
- **(4)** No pilot shall operate a remotely piloted aircraft system unless the operation is conducted in accordance with the procedures referred to in subsection (1).

Site Survey

901.27 No pilot shall operate a remotely piloted aircraft system unless, before commencing operations, they determine that the site for take-off, launch, landing or recovery is suitable for the proposed operation by conducting a site survey that takes into account the following factors:

- **(a)** the boundaries of the area of operation;
- **(b)** the type of airspace and the applicable regulatory requirements;
- **(c)** the altitudes and routes to be used on the approach to and departure from the area of operation;
- **(d)** the proximity of manned aircraft operations;
- **(e)** the proximity of aerodromes, airports and heliports;
- **(f)** the location and height of obstacles, including wires, masts, buildings, cell phone towers and wind turbines;
- **(g)** the predominant weather and environmental conditions for the area of operation; and
- **(h)** the horizontal distances from persons not involved in the operation.

Operations at or in the Vicinity of an Aerodrome, Airport or Heliport

- **901.47 (1)** No pilot shall operate a remotely piloted aircraft at or near an aerodrome that is listed in the *Canada Flight Supplement* or the *Water Aerodrome Supplement* in a manner that could interfere with an aircraft operating in the established traffic pattern.
- **(2)** Subject to section 901.73, no pilot shall operate a remotely piloted aircraft at a distance of less than
 - **(a)** three nautical miles from the centre of an airport; and
 - **(b)** one nautical mile from the centre of a heliport.
- **(3)** No pilot shall operate a remotely piloted aircraft at a distance of less than three nautical miles from the centre of an aerodrome operated under the authority of the Minister of National Defence unless the operation is conducted in accordance with a special flight operations certificate — RPAS issued under section 903.03.

Records

- **901.48 (1)** Every owner of a remotely piloted aircraft system shall keep the following records:
 - **(a)** a record containing the names of the pilots and other crew members who are involved in each flight and, in respect of the system, the time of each flight or series of flights; and
 - **(b)** a record containing the particulars of any mandatory action and any other maintenance action, modification or repair performed on the system, including
 - **(i)** the names of the persons who performed them,
 - **(ii)** the dates they were undertaken,
 - **(iii)** in the case of a modification, the manufacturer, model and a description of the part or equipment installed to modify the system, and
 - **(iv)** if applicable, any instructions provided to complete the work.
- **(2)** Every owner of a remotely piloted aircraft system shall ensure that the records referred to in subsection (1) are made available to the Minister on request and are retained for a period of
 - **(a)** in the case of the records referred to in paragraph (1)(a), 12 months after the day on which they are created; and
 - **(b)** in the case of the records referred to in paragraph (1)(b), 24 months after the day on which they are created.
- **(3)** Every owner of a remotely piloted aircraft system who transfers ownership of the system to another person shall, at the time of transfer, also deliver to that person all of the records referred to in paragraph (1)(b).